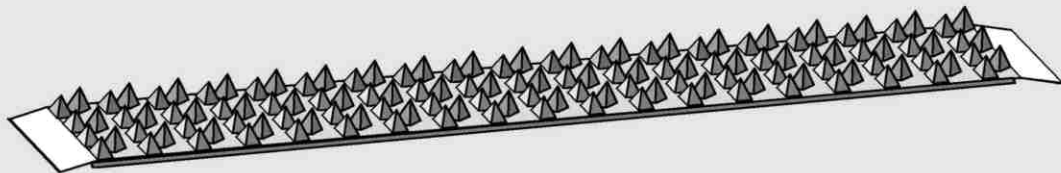


HM 162.39 *ARTIFICIAL ROUGHENED BED SECTION*



- **Simulation of a rough flow bed**

Technical description

Using the HM 162.39 accessory, the user can simulate a very rough flume bed in the HM 162 Modular Flow Channel. The flow bed is made of stainless steel to which pyramid-shaped epoxy resin bodies are bonded. These bodies absorb flow energy from the water. Inlet and outlet panels are fitted at the ends. Removable carrying handles are used to transport the unit to the place of use; the bed is bolted to the base of the channel.

Experiments

Experiments on the following topics are possible:

- Effects of rough beds on flow behaviour
- Effects of the absorption of energy on the water flow rate in open flumes

Using further accessories, investigations in the offshore area are also possible. Thus, e.g., the effects of a rough bed on wave breaking behaviour can be investigated with the HM 162.41 Wave Generator.

Specification

- [1] Flow bed for inserting in the HM 162 Modular Flow Channel
- [2] Bed made of stainless steel, with bonded epoxy resin bodies
- [3] l x w x h 2500 x 300 x 90 mm
- [4] Removable transport aids

Technical data

Dimensions and weight

l x w x h: 2500 x 300 x 90 mm
Weight : approx. 18 kg

Scope of delivery

1 flow bed, 1 set of accessories,
1 instruction manual

Order details

070.16239 HM 162.39 Artificial Roughened
Bed Section